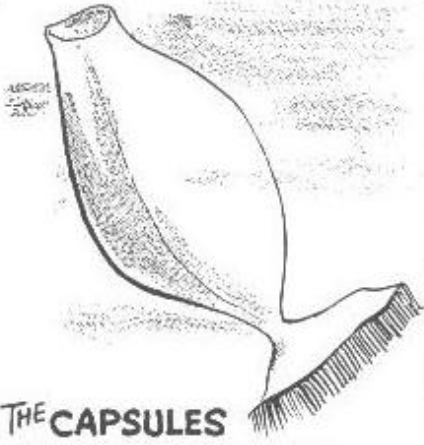
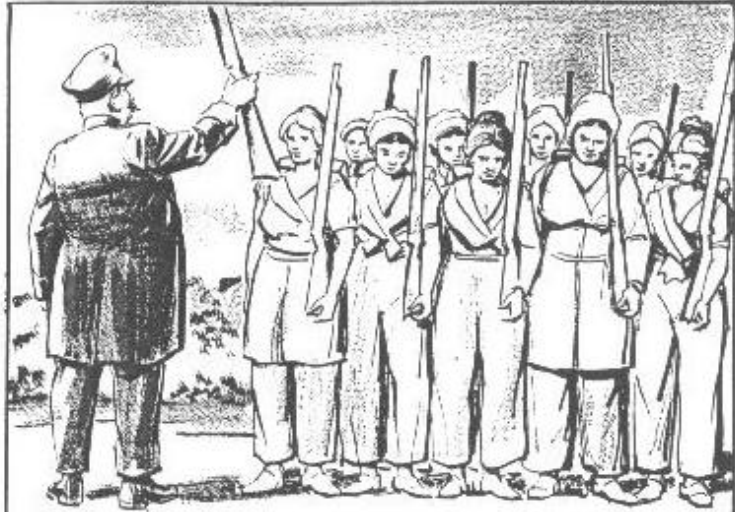


Darwin Twine Ball Museum
Ripley's Believe It Or Not - #2

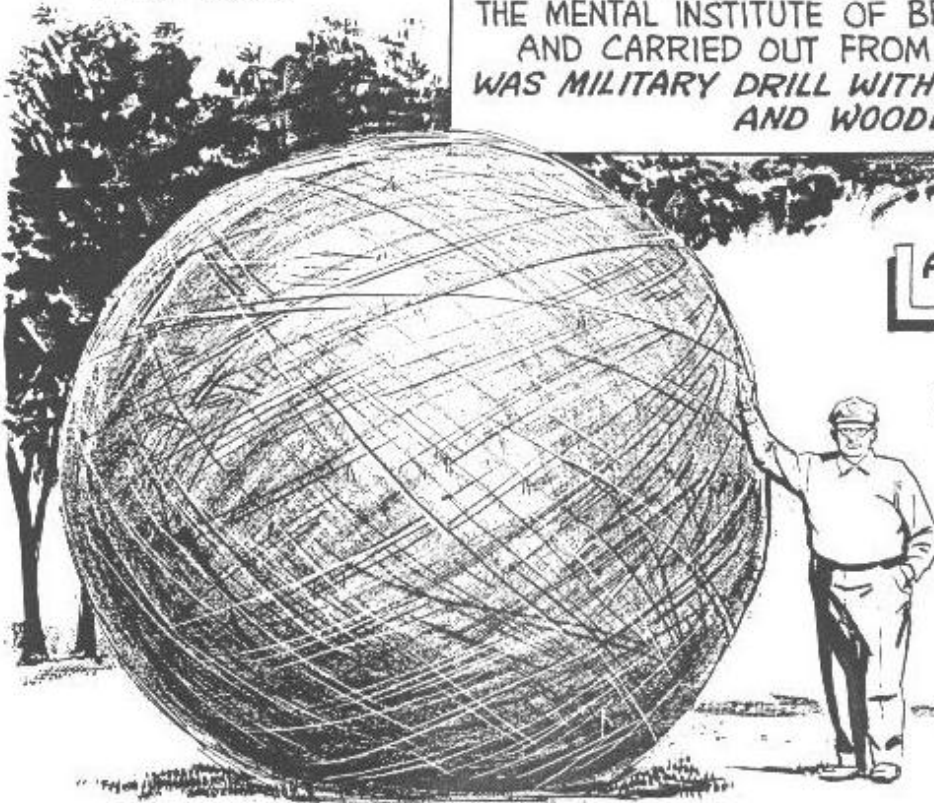
Ripley's **Believe It or Not!**



THE CAPSULES
IN WHICH THE DOG
WHELK HATCHES ITS
EGGS ARE SHAPED
LIKE FISH



THE THERAPY
PRESCRIBED FOR INMATES OF
THE MENTAL INSTITUTE OF BERLIN, GERMANY,
AND CARRIED OUT FROM 1806 TO 1812
WAS *MILITARY DRILL WITH KNAPSACKS
AND WOODEN GUNS*



THE LARGEST BALL OF "STRING" IN THE WORLD
A BALL OF BALING TWINE
33 FEET IN CIRCUM-FERENCE
CONSTRUCTED OVER A PERIOD OF 21 YEARS BY FRANCIS A. JOHNSON, OF DARWIN, MINN.